



**MODEL** KTM 450 EXC F

**YEAR** 2011

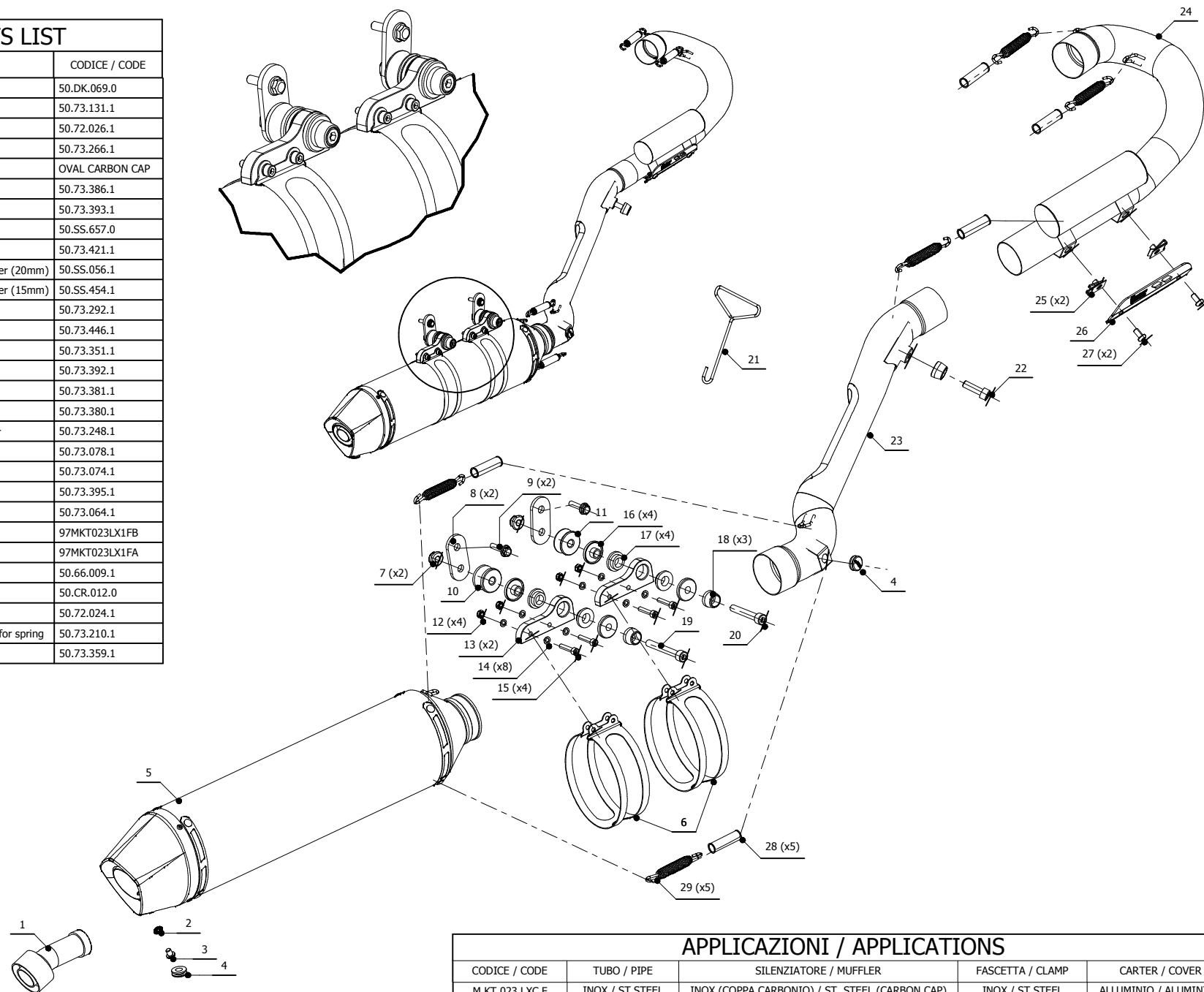
**LINE** STRONGER *Enduro*

**MUFFLER** OVAL STEEL CARBON CAP

**SCHEMATIC**

**ELENCO PARTI / PARTS LIST**

#	QTÀ / QTY	DESCRIZIONE / DESCRIPTION	CODICE / CODE
1	1	DB killer / DB killer	50.DK.069.0
2	1	Rondella M6 / Washer M6	50.73.131.1
3	1	Vite M6 x 8 / Screw M6 x 8	50.72.026.1
4	2	Tappo in gomma / Rubber stopper	50.73.266.1
5	1	Silenziatore INOX / ST.STEEL muffler	OVAL CARBON CAP
6	2	Staffa / Bracket	50.73.386.1
7	2	Dado 8 MA flangiato / Flanged nut 8 MA	50.73.393.1
8	2	Staffa / Bracket	50.SS.657.0
9	2	Vite M6x25 / Screw M6x25	50.73.421.1
10	1	Distanziale in alluminio / Aluminium spacer (20mm)	50.SS.056.1
11	1	Distanziale in alluminio / Aluminium spacer (15mm)	50.SS.454.1
12	4	Dado M5 autobloccante / M5 locknut	50.73.292.1
13	2	Staffa / bracket	50.73.446.1
14	8	Rondella M5 / Washer M5	50.73.351.1
15	4	Vite M5 x 25 / Screw M5 x 25	50.73.392.1
16	4	Boccola / Bush	50.73.381.1
17	4	Silentblock / Silentblock	50.73.380.1
18	3	Rondella in alluminio / Aluminium washer	50.73.248.1
19	1	Vite M8x60 / Screw M8x60	50.73.078.1
20	1	Vite M8x50 / Screw M8x50	50.73.074.1
21	1	Tiramolla / Spring hook	50.73.395.1
22	1	Vite M8x25 / Screw M8x25	50.73.064.1
23	1	Tubo di raccordo / Link pipe	97MKT023LX1FB
24	1	Tubo di raccordo / Link pipe	97MKT023LX1FA
25	2	Dado rapido / Cage nut	50.66.009.1
26	1	Copertura in alluminio / Aluminium cover	50.CR.012.0
27	2	Vite M6 x 12 / Screw M6 x 12	50.72.024.1
28	5	Tubo in gomma per molla / Rubber pipe for spring	50.73.210.1
29	5	Molla media / Middle spring	50.73.359.1



**APPLICAZIONI / APPLICATIONS**

CODICE / CODE	TUBO / PIPE	SILENZIATORE / MUFFLER	FASCETTA / CLAMP	CARTER / COVER
M.KT.023.LXC.F	INOX / ST.STEEL	INOX (COPPA CARBONIO) / ST. STEEL (CARBON CAP)	INOX / ST.STEEL	ALLUMINIO / ALUMINIUM