



**MODEL** KAWASAKI Z 650

**YEAR** 2017

**LINE** FULL SYSTEM

**MUFFLER** OVAL CARBON CAP

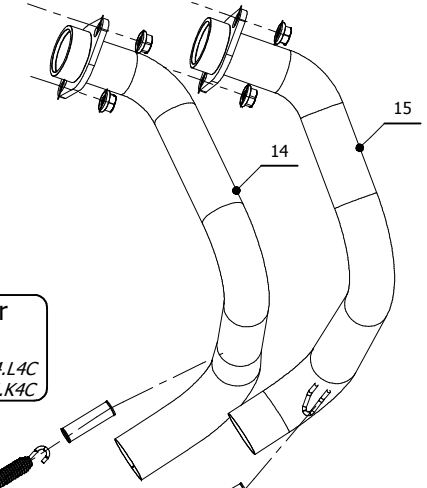
**SCHEMATIC**

**ELENCO PARTI / PARTS LIST**

#	QTÀ / QTY	DESCRIZIONE / DESCRIPTION	CODICE / CODE
1	1	DB killer / DB killer	50.DK.021.0
2	1	Tappo in gomma / Rubber stopper	50.73.266.1
3	1	Silenziatore / Muffler	OVAL 360
4	1	Protezione in gomma per staffa / Rubber protection for bracket	50.73.077.1
5	1	Staffa / Bracket	50.SS.030.0
6	6	Dado M8 flangiato / Flanged nut M8	50.73.393.1
7	1	Staffa / Bracket	50.SS.810.0
8	1	Rondella in alluminio / Aluminium washer	50.73.063.1
9	1	Vite M8x25 / Screw M8x25	50.73.064.1
10	1	Vite M8x45 / Screw M8x45	50.73.602.1
11	1	Rondella alluminio / Aluminium washer	50.73.291.1
12	2	Boccola / Bush	50.73.381.1
13	1	Silentblock / Silentblock	50.73.380.1
14	1	Collettore #1 / Down pipe #1	9773K044S2A
15	1	Collettore #2 / Down pipe #2	9773K044S2B
16	1	Tubo di raccordo 2-1 / Link pipe 2-1	9773K044S2C
17	3	Molla media / Middle spring	50.73.359.1
18	3	Tubo in gomma per molla / Rubber pipe for spring	50.73.210.1
19	1	Db Killer forato / Drilled DB killer	50.DK.082.0

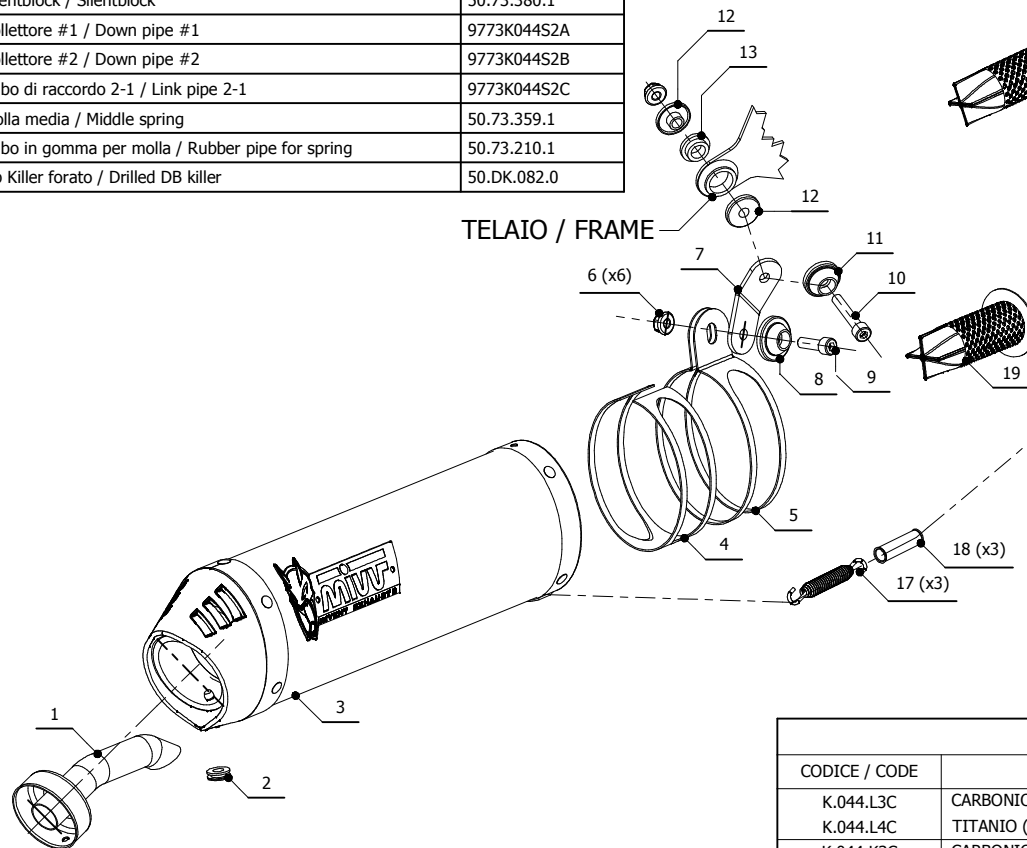


- MONTAGGIO FASCETTA  
- BRACKET FITTING



**Catalytic Converter**  
Cod. ACC.042.A1  
*Optional for K.044.L3C - K.044.L4C*  
*Included in K.044.K3C - K.044.K4C*

**TELAIO / FRAME**



**APPLICAZIONI / APPLICATIONS**

CODICE / CODE	SILENZIATORE / MUFFLER	TUBO / PIPE	FASCETTA / CLAMP	NOTE
K.044.L3C	CARBONIO (COPPA CARBONIO) / CARBON (CARBON CAP)	INOX / ST.STEEL	INOX / ST.STEEL	CATALYTIC CONVERTER NOT INCLUDED
K.044.L4C	TITANIO (COPPA CARBONIO) / TITANIUM (CARBON CAP)	INOX / ST.STEEL	INOX / ST.STEEL	CATALYTIC CONVERTER NOT INCLUDED
K.044.K3C	CARBONIO (COPPA CARBONIO) / CARBON (CARBON CAP)	INOX / ST.STEEL	INOX / ST.STEEL	CATALYTIC CONVERTER INCLUDED
K.044.K4C	TITANIO (COPPA CARBONIO) / TITANIUM (CARBON CAP)	INOX / ST.STEEL	INOX / ST.STEEL	CATALYTIC CONVERTER INCLUDED