



**MODEL** KTM 690 DUKE

**YEAR** 2012 -->

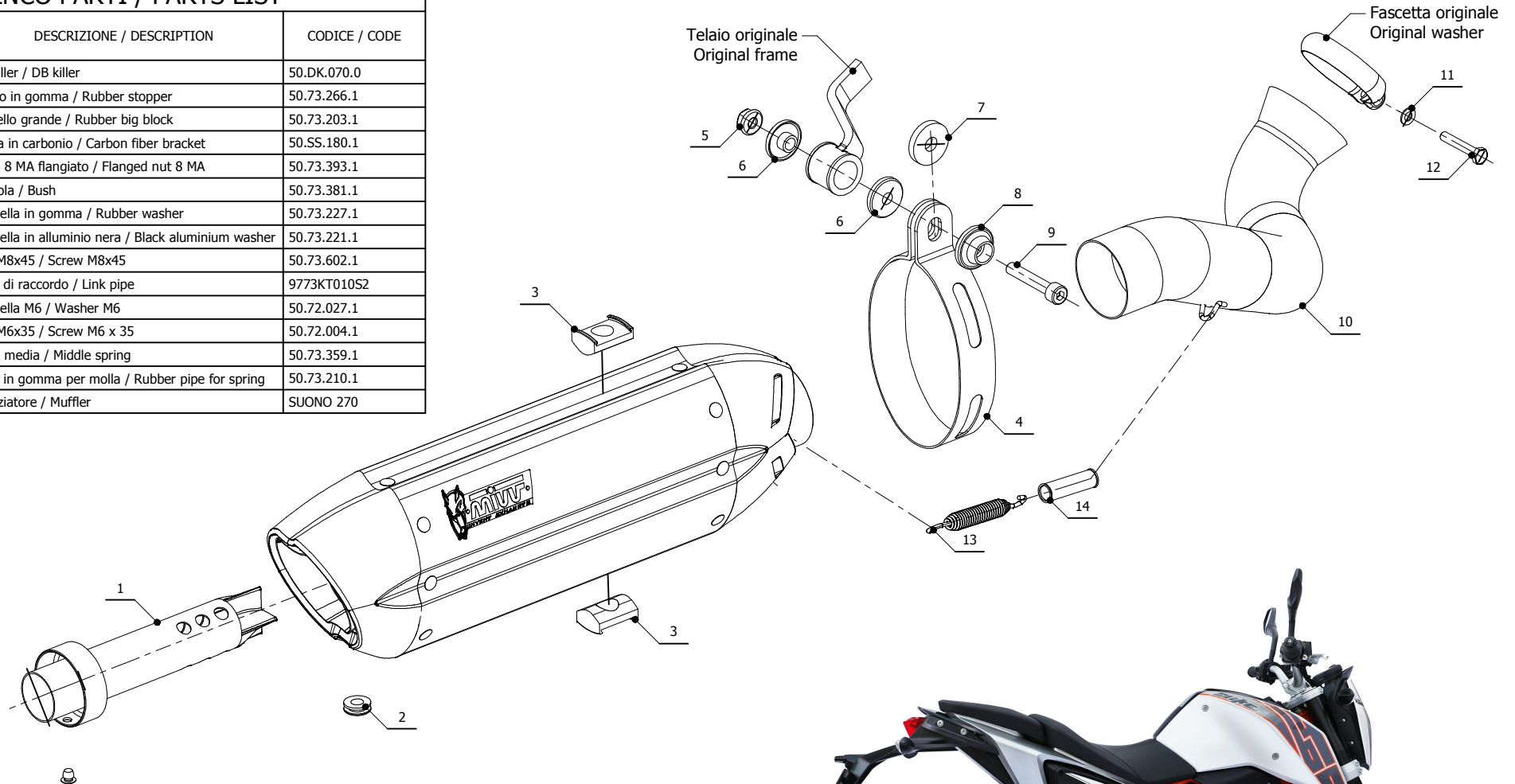
**LINE** SPORT

**MUFFLER** SUONO

**SCHEMATIC**

**ELENCO PARTI / PARTS LIST**

| #  | QTÀ / QTY | DESCRIZIONE / DESCRIPTION                           | CODICE / CODE |
|----|-----------|---|---------------|
| 1  | 1         | DB killer / DB killer                               | 50.DK.070.0   |
| 2  | 1         | Tappo in gomma / Rubber stopper                     | 50.73.266.1   |
| 3  | 2         | Tassello grande / Rubber big block                  | 50.73.203.1   |
| 4  | 1         | Staffa in carbonio / Carbon fiber bracket           | 50.SS.180.1   |
| 5  | 1         | Dado 8 MA flangiato / Flanged nut 8 MA              | 50.73.393.1   |
| 6  | 2         | Boccola / Bush                                      | 50.73.381.1   |
| 7  | 1         | Rondella in gomma / Rubber washer                   | 50.73.227.1   |
| 8  | 1         | Rondella in alluminio nera / Black aluminium washer | 50.73.221.1   |
| 9  | 1         | Vite M8x45 / Screw M8x45                            | 50.73.602.1   |
| 10 | 1         | Tubo di raccordo / Link pipe                        | 9773KT010S2   |
| 11 | 1         | Rondella M6 / Washer M6                             | 50.72.027.1   |
| 12 | 1         | Vite M6x35 / Screw M6 x 35                          | 50.72.004.1   |
| 13 | 1         | Molla media / Middle spring                         | 50.73.359.1   |
| 14 | 1         | Tubo in gomma per molla / Rubber pipe for spring    | 50.73.210.1   |
| 38 | 1         | Silenziatore / Muffler                              | SUONO 270     |



**APPLICAZIONI / APPLICATIONS**

| CODICE / CODE | TUBO / PIPE      | SILENZIATORE / MUFFLER                          | FASCETTA / CLAMP        | CODICE OMOL. / HOMOL. CODE |
|---------------|------------------|---|-------------------------|----------------------------|
| KT.010.L7     | INOX / ST. STEEL | INOX (COPPE CARBONIO) / ST. STEEL (CARBON CAPS) | CARBONIO / CARBON FIBER | ME040 e9 1308              |
| KT.010.L9     | INOX / ST. STEEL | STEEL BLACK                                     | CARBONIO / CARBON FIBER | ME040 e9 1308              |